

Internal Works – Further Information

The club's building subcommittee have been working closely with the club committee, our training leadership team, and youth representatives to help develop the plans for the internal works – and we're excited to share the details with you! Below is some further information about the internal works

Why are these internal works needed?

Aside from the changeroom/kitchen upgrades that we undertook in 2018, the last major change that was made to our clubhouse was the construction of the double storey timber section of the club closest to the beach, back in 1999/2000. Here's some interesting stats - when that building was completed, the club had around 600-700 members, 300 nippers, and we were delivering around 100 awards a year.

Since then, our club has gone from strength to strength – our membership numbers have more than doubled, the number of awards we deliver each year has grown 2-3 fold, and our nipper numbers have grown 70% (Go Leo!).

This is all great news – but with this growth has come pressure on our clubhouse facilities to support more activity – in particular more people and more training. To keep up with the growth of the club, we need to continue improving our facilities - in a targeted way. The club masterplan provides a considered strategy for staged upgrades of our facilities, focusing on the areas where our members have the most need for improvement. The next stage of the internal works includes creating a new multi-purpose room with media facilities, and a new caretakers room.

What will the internal works involve?

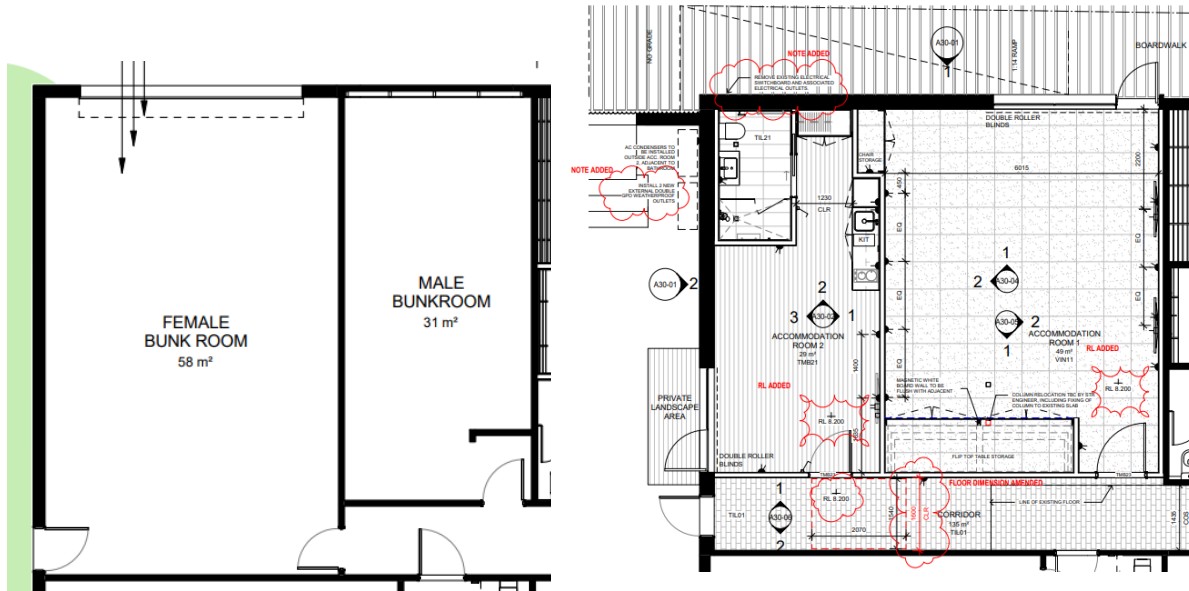
The new multi-purpose room will be a 50m² open plan room, with dedicated storage for training furniture, multimedia screens, and some easy to move soft furniture. We've deliberately designed the new space to be as flexible as possible to maximise the use of the space, and to enable future changes and adaptation as the club's needs continue to develop and change into the future. The room has been designed to support activities like training, meetings, and group presentations, in an area that can be separated from the public circulation spaces of the club to avoid noise and disruptions from other club activities. When these activities are finished, the training furniture can be moved into the storage cupboards, and the soft furniture can be moved around to create a hangout space for younger club members to socialise in

The caretakers room will be relocated from the existing location adjacent to the first aid room, to the corner of the clubhouse where the bunkrooms are located. This will free up valuable space in the more 'active' part of the clubhouse adjacent to the first aid room, and will provide improved amenities to our caretakers and course trainers who use these facilities.

As part of these works the fire safety systems throughout the club will undergo a much needed upgrade to bring them in line with current building code requirements, and to improve safety for all members who use the clubhouse.

Where will these new spaces go, and what will they look like?

The new caretakers room and multi-purpose room will be built where the existing bunkrooms are located, in the North East corner of the club closest to the camp grounds. Below is a plan showing the arrangement of the existing bunkrooms, and the new caretaker and multi-purpose room. A render of the new training room is also shown.



Images: Existing bunkrooms (left), and proposed caretakers and multi-purpose room (right)



Image: Renders of the proposed multi-purpose room

Does this mean we're getting rid of the club's accommodation for good?

The club has a long history of providing accommodation facilities to members, many of whom live in the city or further afield. We're pleased to confirm that the intention is to maintain accommodation in the club! While the bunkrooms as we know them will be changing, the changes will allow these spaces to be used for a range of other activities during the year, maximising the benefit that our members get from our accommodation spaces

Through close consultation with our training and course delivery leaders and with the wider club committee, we've come up with a plan that changes the existing bunkrooms into more flexible, multi-purpose spaces which can support a range of activities. This will allow this valuable space in our clubhouse to be used by more of our members, for more of the year!

Through our consultation, it's become clear that the club's need for large group bunkrooms has been reducing over time. Despite representing a large portion of the club's usable footprint, we typically only have large groups staying overnight for a handful of days a year. It's clear that our members could be getting much better use from these bunkroom spaces! The existing bunkrooms are also a long way from meeting current fire safety and building code requirements, and significant investment would be required in order to bring them up to current standards.

Following a general trend seen at other lifesaving clubs in Victoria, our club committee and training leaders have agreed that future camps won't be including large-group overnight stays. This is for a variety of reasons, including looking after the wellbeing of our trainers and assessors who have borne the responsibility that comes with supervising large groups of young members staying overnight, aligning with LSV's principles around member protection, and improving the engagement of course participants - which many of our bronze camp alumni will confirm often wanes when overnight stays are involved!

Due to Covid restrictions, the club has in fact already been running all of our courses without overnight stays for the past two years. During this time, all of our courses including bronze and SRC courses, have been run without overnight stays – and very successfully too!

Large groups aside, there is still a very real need for accommodation within the clubhouse – in particular for course trainers, club caretakers, and for those course participants who live further afield and don't have local accommodation available. With this in mind, the new spaces have been designed to still allow overnight stays, with all of the associated fire safety, evacuation and building permit requirements to enable this. The caretakers room will have permanent bedding that can support trainers and one-off overnight stays, and the multi-purpose room has been designed to allow overnight stays for those course participants without local accommodation options, who can use the open-plan multi-purpose room to set up moveable camp bedding/mattresses for this purpose.

When will the works start, and when will they be completed?

Internal works are due to start in late April 2022, and to be completed by the middle of the year, ready for next season!

How will the internal works be funded?

Thanks to hard work from our grants and sponsorship team, we've been fortunate enough to have received funding from Mornington Peninsula Shire Council, the state government's Emergency Services refurbishment grant through LSV, and through a Federal Government grant. These grants will cover the full cost of the internal works.

We are however fundraising for the next stage of works, which has undergone concept design and is currently going through the planning approvals process. These works will include:

- Replacing the existing shipping containers that we currently use for storing competition and lifesaving gear, and building an attractive and environmentally sympathetic storage space
- Better access on the east side of the facility providing direct access from the carpark to the changerooms and separating pedestrian and vehicle movements
- New external shower, communal and barbeque areas

We would love you to get involved and there are many ways you can support us:

- Fundraise
- Donate online via the club's [payment gateway](#) (please mention the building works)
- Donate by cheque payable to Point Leo SLSC and post it to P O Box 472 Balnarring 3926
- Donate by direct bank transfer to our Point Leo Hub Project account. Please contact club administration via our [contact form](#) with Point Leo Hub Project Donation in the subject line for these details.

Point Leo SLSC is an Endorsed Deductible Gift Recipient.