

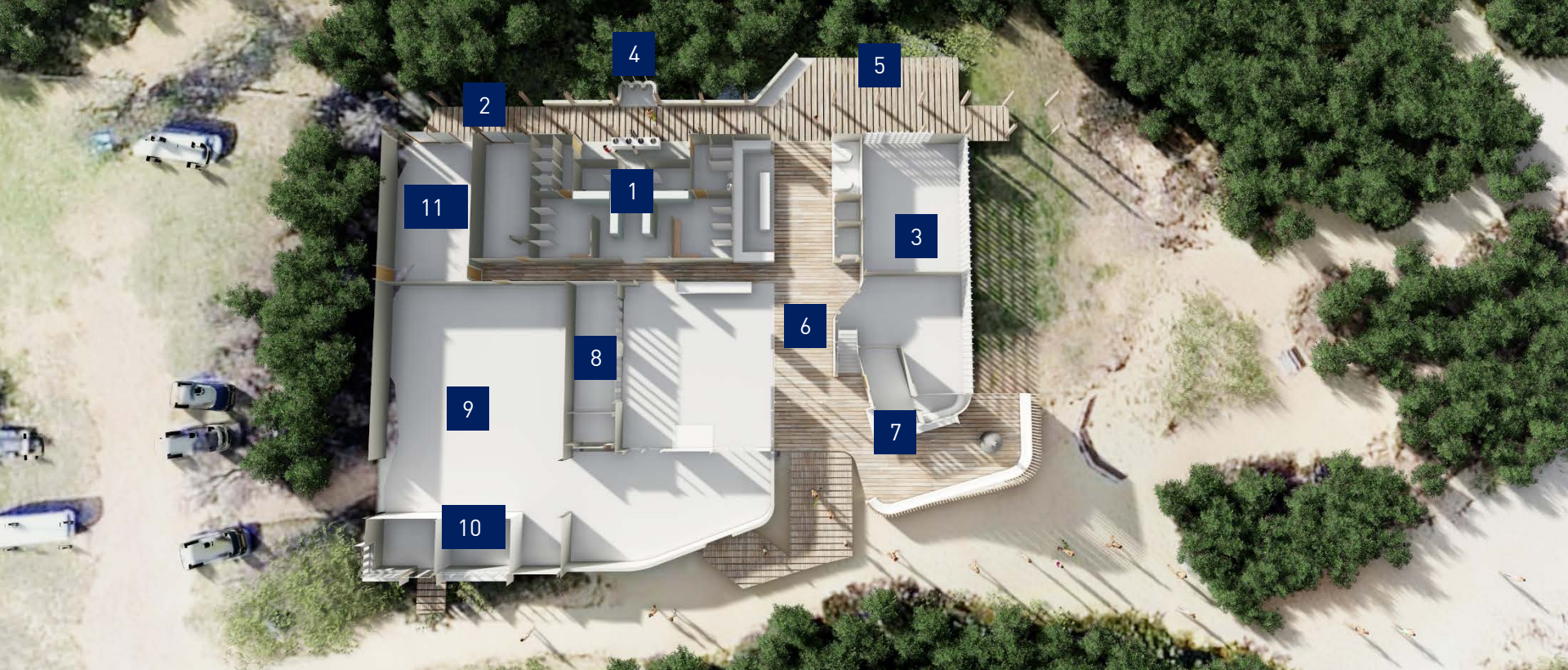
# POINT LEO SLSC

---

CLUBHOUSE REDEVELOPMENT SCOPE

2 APRIL 2017





## FUTURE VISION

- 1 NEW ENLARGED AMENITIES WITH EXTERNAL ACCESS
- 2 NEW BOARDWALK AND EXTERNAL AMENITIES ACCESS

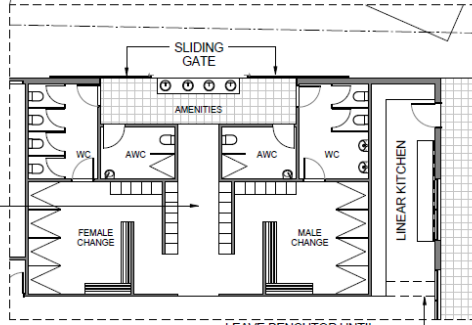
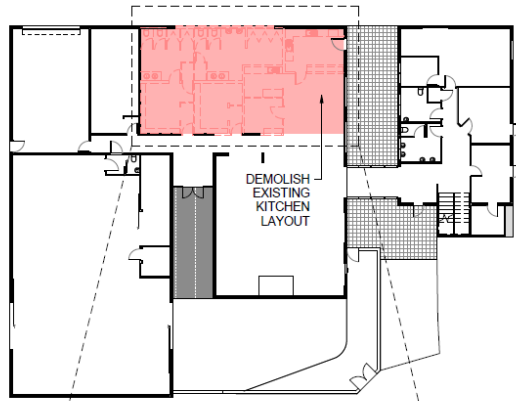
- 3 SKI & BOARD STORE TO FRONT OF CLUBHOUSE
- 4 OUTDOOR SHOWERS
- 5 BBQ TERRACE
- 6 INFORMAL STREET / GATHERING SPACE
- 7 RECEPTION & KIOSK

- 8 FLEXIBLE STORAGE – TRAINING, FITNESS, TABLES
- 9 PATROL ADMIN – ENLARGED PATROL STORAGE
- 10 FIRST AID SHOPFRONT NEAR PARKING
- 11 DORMS OPEN TO BOARDWALK



**FUTURE VISION**  
GROUND FLOOR PLAN





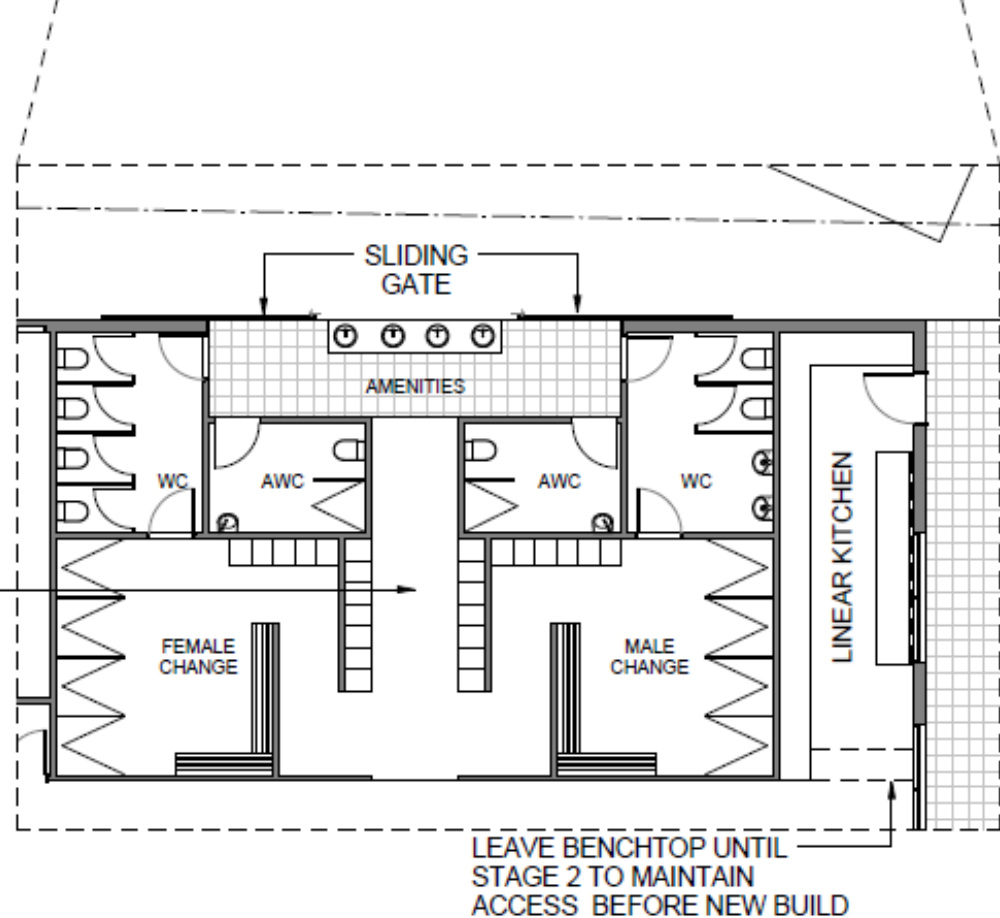
COMBINED AREA  
107 sqm

LEAVE BENCHTOP UNTIL  
STAGE 2 TO MAINTAIN  
ACCESS BEFORE NEW BUILD

# STAGE 1

## AMENITIES & KITCHEN

COMBINED AREA  
107 sqm

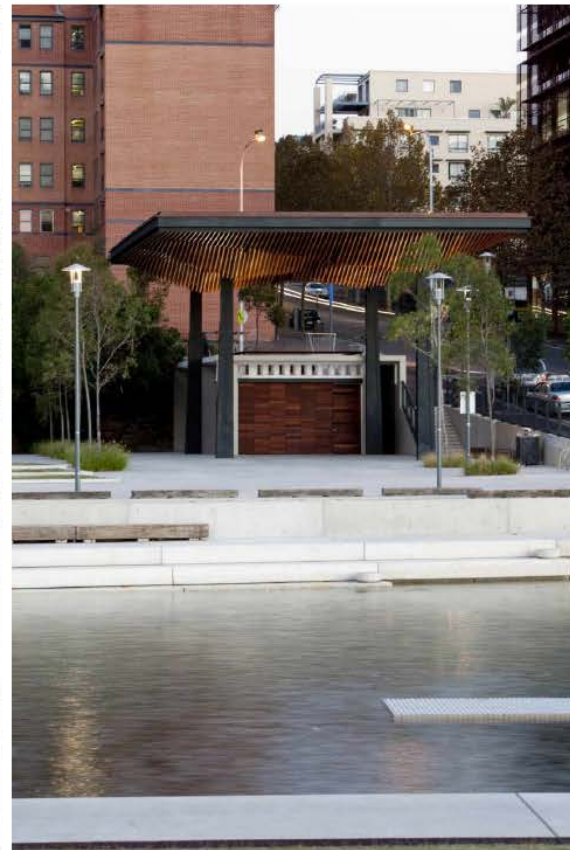
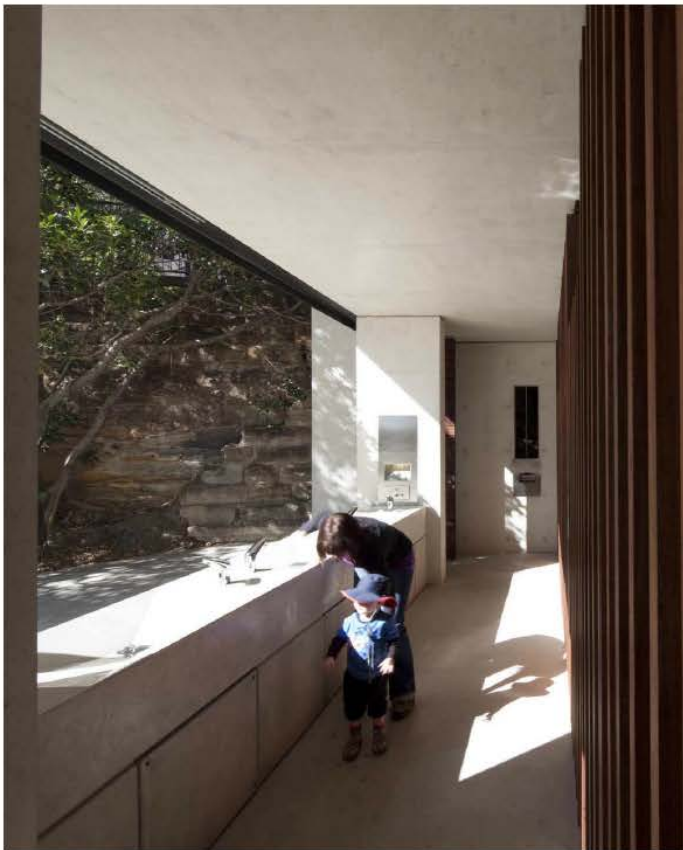


**STAGE 1**  
AMENITIES & KITCHEN

# STAGE 1

AMENITIES & KITCHEN





**AMENITIES BENCHMARKS**  
PIRRAMA PARK AMENITIES, SYDNEY





**AMENITIES BENCHMARKS**  
TAMARAMA KIOSK, SYDNEY

# POINT LEO FUTURE

---

